



THE MANOR™

— Since A.D. 1235 —

SOMERSET ENGLAND

*...Your Own Exclusive Use
Country Manor House -
For A Day, A Night Or Longer*

Hire a 13th Century Manor House for any event and you can have up to 24 people staying overnight.

No hotel reception, no intrusive guests, just total freedom and staff as and when required.... The Manor offers extensive facilities and beautiful walks, in addition to an indoor sauna and an outdoor heated swimming pool and tennis court.

We are best described as the opposite of a Hotel and the associated restrictions; we are a unique & exclusive Manor House for hire offering our facilities and grounds for day hire and overnight stays.

The Manor lies at the foot of the wooded slopes of the Blackdown Hills in Somerset and is the perfect location for:

- Corporate Events & Outdoor Pursuits
- Private Weekend or Mid-Week House Parties
- Private weekend or Mid-Week Weddings
- Fine Dining Events Mid-Week and Weekends
- 24 hour-plus "Exclusive Use" Stay Overs
- Bespoke Events - Television/Film Locations and Sound Recording.

Under two hours by rail from London Paddington, and three hours by car from London to Junction 26 of the M5.

This brochure gives a brief overview of our facilities and unique offering. For more detailed information, and to learn of the wide range of additional facilities and bespoke services we can offer, please see our website www.themanorsomerset.co.uk or telephone 01823 666 297 for more information on your specific requirements.



*Exclusively yours – the venue of choice:
we are the venue that is adaptable to every type of function.*

An extensive programme of internal refurbishment and external landscaping has preserved the general 'feel' of the old Manor & gardens and makes a perfect setting for everything from weekend house parties and corporate functions to a relaxing break in elegant surroundings.

We can be available for the day, with or without an overnight stay, or for several days. Longer stays can usually be arranged – just contact us with your requirements.

The estate covers over seven acres and includes a typically English miniature lake within the grounds with a koi pond, formal impeccable gardens, rose garden and lawns described as some of the finest found at a country Manor.

The facilities within the grounds include an indoor sauna, outdoor heated swimming pool, tennis court, large paddock for games, team building activities or specialist marquees and a croquet lawn.





History @ The Manor

The origins date back to 1235 when Bishop Joceline of Wells exempted Gerebert, a Knight of Wellington, from paying hay taxes. The suffix 'ton' can mean either a settlement or second home, hence creating Gerbestone. In 1612 Thomas Frances moved into Gerbestone with his bride, Suzanna, daughter of George Lutterell of Dunster Castle.

The Manor then underwent a major building programme with wings being added at both north and south ends, replacing the solars. The spiral staircases were enclosed and the whole was reconstructed in Tudor style.

In 1695 The Manor was sold to Sir John Ewell of Exeter. One of Sir John's grandsons was Aide to the Duke of Wellington at Waterloo (the Duke took his name from our town, his monument is on the hill to the south west of The Manor).

The Lloyd Fox family bought The Manor in 1924 and embarked on a massive modernisation programme, employing the renown Arts and Crafts architect Hubert Lidbetter. The Manor remains privately owned.



Exclusive Use @ The Manor

The Manor is exclusive; the owner's prime objective is to allow others to experience the very special experience of The Manor - an opportunity not to be missed if you are planning a party or other special occasion with friends and family.

Totally exclusive and highly private, The Manor is one of England's finest examples of medieval England, showing England's wonderful history and glory through the ages. The history and the atmosphere of this most welcoming Manor will make you and your guests feel totally relaxed, revitalized - and provide you with one of the most memorable occasions of your life.

Privately owned and privately managed, the Lord and Lady of the Manor specialise in providing their guests with one of the most relaxing, fun and bespoke stays experienced anywhere. Our guests set our standards; nothing is too much trouble - whether you land by helicopter, arrive by horse and carriage, or drive up in a Range Rover with the dogs or in your MPV with the children.

Set deep in the heart of Somerset overlooking the Blackdown Hills in an area of officially recognised outstanding natural beauty, you can lose yourself in over 7 acres of formal and informal lawns and gardens. Wander into over 15 acres of additional hideaways nearby - or simply sit by the Koi Pond for lunch, then play tennis or swim. Maybe you'll use the sauna, prior to having a candle-lit dining experience (prepared by award-winning chefs brought in especially for your event) in the English rose garden, under the ancient pagoda or in the 13th century medieval banqueting hall.

Attention To Detail...



You may choose to self-cater or use our dedicated catering team (external catering is not an option) during your visit and the two kitchens at the manor offer a country-style cooking experience with an oil-fired Aga, as well as modern cooking for those who need a quick fix!

Or, for that special occasion, you may wish to choose from one of The Manor's fine menus (A sample can be seen under "Fine Dining" on our web site).

The Manor is furnished to the very highest of standards set by the Lord himself - not by an anonymous "hotel/venue" designer. The Manor is functional and comfortable. The toiletries are supplied by the world's finest toiletries brand and the music and TV systems are by Bose. Throughout The Manor - be it the snug room, the drawing room, wooded-panelled pool room or one of the bedroom suites - you will be spoilt with practical, stylish and homely comfort.

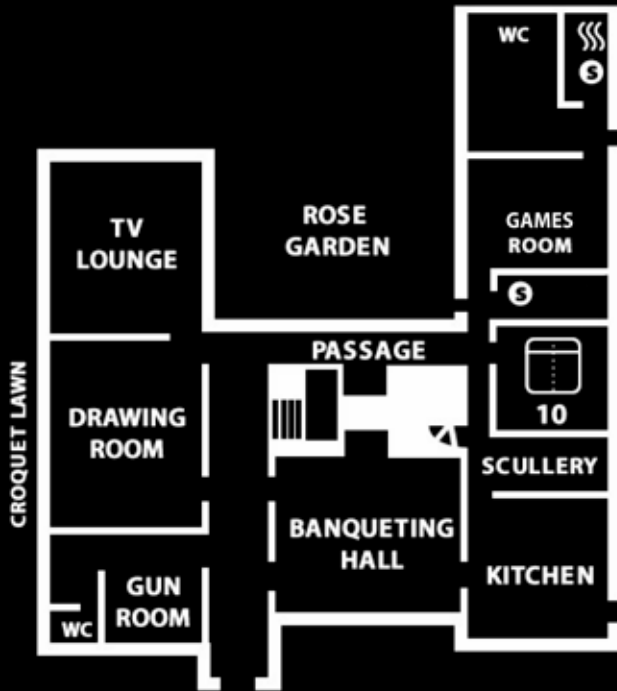
The Manor is not a hotel; it is not open to the public; we only accept one booking at a time, so your party will have the exclusive use of the Manor during your time with us be it for the day or longer - you decide how long! We are certain you will not have experienced anything like The Manor, the service, the attention to detail or the warm welcome.

*We are The Manor, Somerset, England:
"Exclusively Yours - The Venue of Choice"*

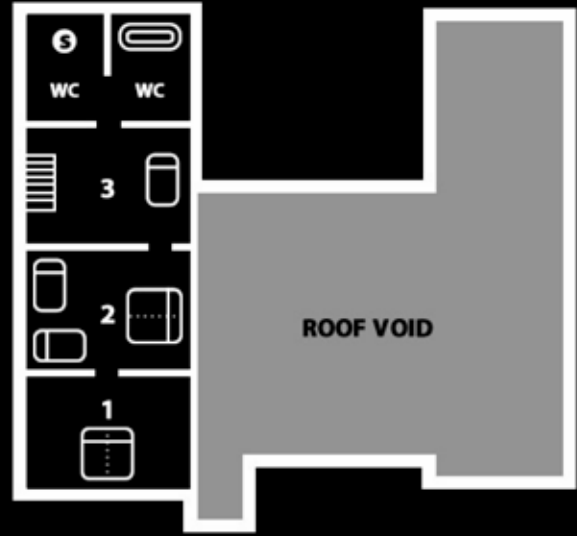
Call 01823 666297 to discuss your own bespoke experience.

The Rooms...

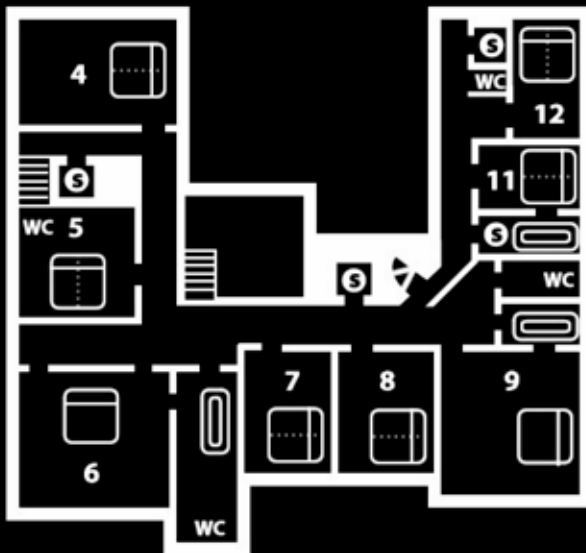
The Manor Floor Plan



GROUND FLOOR



KNIGHT'S QUARTERS



BEDROOM NAMES

- 1, 2 & 3 Knight's Quarters
- 4 Old Nursery Room
- 5 Charles' Room
- 6 Lord Spencer's Suite
- 7 Ship Room
- 8 Countess Weir Room
- 9 Duke of Wellington Suite
- 10 The Study Room
- 11 West Wing 2
- 12 West Wing 1

KEY

- Double Bed
- Zip & Link Bed
- Single Bed
- Bathroom
- Shower Room
- Toilet
- Sauna

The Bedrooms

Our bedrooms all have the trappings of luxury, with your every need catered for: everything from tissues to bathrobes, and exclusive BVLGARI toiletries.

12 luxurious bedrooms from the Knight's Quarters in the heights of The Manor (boasting its own luxury shower, bath and 2 WCs) to the Four Poster Lord Spencer or Duke of Wellington Suites, situated to the corners of the North Wings. There are further versatile twin or double-bed options in the other luxury bedrooms - in the North, East and West Wings of this historical Manor House.

Tactfully and tastefully decorated with individual styling, they have been described by our guests as the most comfortable rooms they've ever stayed in.

Come and try for yourself...





Weddings @ The Manor

The Manor is an idyllic, exclusive setting for weddings; we offer the ceremony, reception and accommodation in one beautiful location. The Banquet Hall and Drawing Room are separately licensed for Civil Wedding ceremonies (up to 60 guests in The Banquet Hall) and external receptions, which allow us to cater for over 400 guests.

Start with drinks on the croquet lawn before moving to a marquee overlooking the miniature lake for dinner and dancing. And don't forget - you have exclusive use of The Manor during your celebration.

Smaller, more intimate, receptions can take place in the Drawing Room, which is particularly cosy for winter weddings when lit with candlelight and a roaring fire. We create imaginative and visually stunning menus to match your exact requirements and a team of talented chefs and professional butlers can be installed at The Manor to look after your guests' every need.



Bespoke Weddings @ The Manor have ranged in cost from day hire and a Wedding Breakfast from £7,990+VAT, depending on guest numbers, catering needs and additional services requested.

Every wedding is different – and as we are not a hotel that can only offer standard packages, we take pride in accommodating your specific requirements.

Contact us for help and advice

in planning your special day and we'll come up with a price to suit your precise needs.

You are able to request an informal day hire wedding, part or fully catered; your party can choose to stay here, for a day or longer (The Manor sleeps 24) with additional accommodation nearby; either in a separate on-site venue (up to 10) or with a wide variety of local accommodation providers.

Wedding parties can recharge guests to stay over.



Exclusively Yours – The Wedding Venue of Choice

Whether you need extra marquees, a band or “controlled/professional” fireworks displays by our authorised team – or to cater for particular needs – we'll be able to put a bespoke offering and menu selections together to your specific needs.

The wedding process includes a private viewing, the complimentary services of our professional event planner, who will – if you wish – help plan, organise and source all the services you need, or

they can offer a part service – the choice is yours.



Please note that for insurance and health and safety reasons, The Manor only allows its approved Marquee/Catering/General Supplier teams on site for events. Other suppliers eg florists/photographers are by agreement only.

For the wedding breakfast, a maximum of 60 guests can be seated in the Banquet Hall. Should you have larger numbers, you may use the Rose Garden with a smaller marquee. For buffet-style wedding breakfasts, The Manor can cater for over 100 guests internally and many more outside on and around the formal grounds.



Typical arrangements for Weddings@The Manor:

Non-residential weddings options:

Exclusive day use:

from 8am with Carriages at 11:30pm
(Subject to availability, Carriages can be extended depending on party numbers and availability when booking).

The “weekend” wedding:

Residential weddings – exclusive use

Typical residential wedding weekends see parties staying for 3 days and 2 nights over a weekend: luxurious overnight accommodation, which includes exclusive use of The Manor, grounds, outdoor heated pool (summer only) sauna and tennis court.

Our Exclusive Residential tariff includes everything for your stay, apart from catering and drinks. Wedding parties looking to stay when reserving the formal wedding day hire (which includes luxurious catering) receive a discounted overnight stay for the duration.

As a standard we check-in parties from 12 noon and check-out up to 6pm; subject to availability, we offer flexible arrangements for the bride and groom at no extra charge. Day hire check-in and residential check-in can be brought forward by prior agreement.

We are able to offer the widest range of choices: an informal Wedding Breakfast, such as Hog Roast, Fish & Chips, Canapé reception through to Main Course wedding meals of two or more courses – such as The Knight's Fine Dining Menu: a more formal wedding breakfast, with a specialist twist. All menu selections are possible, along with specific dietary needs.

We typically will supply wine/Wedding Day drinks to your selection from our dedicated wine merchant's extensive list at very reasonable prices; in addition, they can also offer a 'free bar' to your guests if you wish to cover the drink costs (with whatever range of drinks you wish to offer) or a pay bar.

Alternatively, you can by agreement provide your own wine (outside of the Wedding Breakfast) there is no traditional 'per bottle' corkage charge but a service charge may apply by the catering team to cover the additional costs incurred in chilling/serving and removal of items afterwards.

We do not offer 'packages', so you have maximum flexibility for your special, exclusive day. As each couple's requirements are special and particular to them, we are keen to deliver exactly what you wish; please contact us to discuss your general and specific requirements, and we'll put together a range of options for you to consider.

Have the luxury of your wedding at your own Manor House...no other guests, no intrusions, everything dedicated to giving you the day of your life.

Contact our experienced and dedicated wedding planning team on 01823 666297 to begin to plan your big day, complete the enquiry form on the web site, or email knight@themanorsomerset.co.uk





Wedding Menus...

At The Manor we want you to enjoy your Wedding Day as much as possible. Visit our website to see more details of our suggestions – from fun to exquisite dining.

Champagne Reception and Canapés @ The Manor

The Manor Selection

The Knight's Shooting Menu

The AD 1235 Medieval Banquet

Hog & Lamb Roasts

Qualified Chefs are provided by The Manor for all Wedding meals. The use of external chefs is not permitted.

Please contact us for more information on any of our menus or your bespoke requirements.

A typical menu selected by guests...

Starter

Creamy chicken and chestnut mushroom risotto flavoured
with vermouth, mascarpone and aged Parmesan

Fine duck and port pate served with seasonal leaves,
crusty bread and plum chutney

Classic Bruschetta, with a tangy tomato salsa,
rocket salad and pesto oil (V)

Smoked salmon and haddock fish cakes flavoured with coriander and
horseradish served with a sweet chilli sauce

Parma ham and roast walnut salad with aged
balsamic and sun-blushed tomatoes

Main

Supreme of corn-fed chicken with boulangere potatoes
and a rich Madeira sauce

Slow cooked pork loin with a millefeuille of potato and
an apple and cider sauce

Fillet of oven baked plaice with a citrus crust,
buttered new potatoes and a chive butter

Lamb chump with confit shoulder, roasted root vegetables and lamb jus

Creamy watercress and Roquefort pasta with fennel crisps (V)

Served with a selection of seasonal vegetables for the table

Dessert

Classic crème brûlée with vanilla shortbread

Lemon posset with fromage frais and honeycomb

Vanilla cheesecake with a mixed berry compote and clotted cream

Traditional apple or rhubarb crumble with crème anglaise



*“The Manor” is simply the most perfect place for this very special occasion. Every moment has been magical; attention to detail and making everyone feel welcome is truly unique.
Truly unforgettable memories.*

Rosie Nixon, London

Editor, Hello!

‘We really can’t thank you enough for this weekend. The house was beautiful and filled with love and laughter for three full days. You worked so hard to make everyone feel welcome and no request was ever too much trouble. A magical place run by two lovely, lovely people. Everyone was amazed by the whole experience.’

Claire and Miles

Frome/Abu Dhabi





The Manor – Your Exclusive Use Stay

Every stay is different - so each tariff is unique. The Manor comfortably accommodates 24 people for residential stays. Please call 01823 666297 for your bespoke and personal requirements.

For bespoke weekend stays please contact us.

We are always asked what a wedding costs – well, you set the budget. Fuller wedding information available on request but, as a guide, bespoke weddings at The Manor, including catering, have ranged in cost from £9,995+VAT upwards, based on catering for 50 formal wedding breakfasts and day hire; accommodation is always an optional extra.

An informal wedding day hire typically costs from £7,990+VAT

Stag and Hen parties only considered by prior agreement with the owners.

Pets at owners' discretion.

Corporate and organisations - please contact us for more information with an indication of your requirements.

What is included?

Based on exclusive hire for up to 24 guests:

Bathroom

All linen Towels • BVLGARI toileteries
Pool towels • Bathrobes • Hairdryers

Kitchen And Dining

All disposables, condiments • Full dinner service and glassware
Filtered water and ice on demand • Formal banqueting cloths
Formal napkins • Supply of logs for the fires • fire lighters • BBQ consumables

Entertainment

Bose sound systems • Full satellite TV/entertainments package • Wifi • DVD player

Outdoor/indoor games

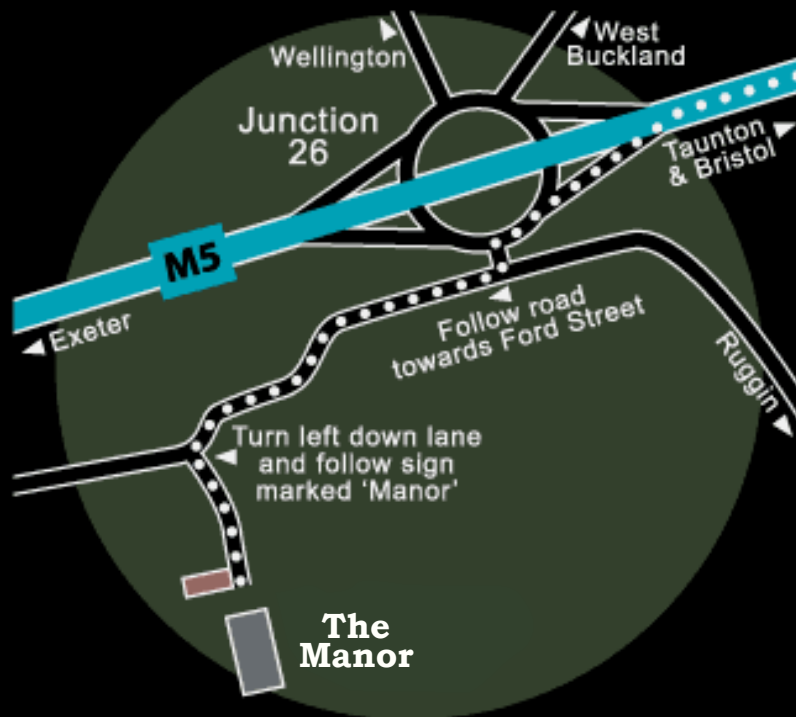
Tennis rackets/balls • Tennis court • Heated outdoor swimming pool (summer only, typically May to end September) • Sauna • Pool/Games Room

Exclusively yours – the complete venue of choice

The Location

The Manor is situated in Somerset, between Taunton and Wellington, near junction 26 of the M5 motorway.

Taunton mainline railway station, which is under 2 hours from London, is only 15 minutes from The Manor.



The Manor
Gerbestone Lane
West Buckland
Wellington
Somerset
TA21 9PJ

+44 (0)1823 666 297

Please note that The Manor is on wholly private property; although we are always happy to give prospective visitors a tour of the venue and facilities, these MUST be pre-arranged to preserve the privacy of our clients.



THE MANOR™
— Since A.D. 1235 —
SOMERSET ENGLAND